



CONQUER the cold

Be prepared to conquer the cold with Cumberland's AV heaters, tunnel inlet door systems and RollSeal doors.

AV SERIES HEATERS

AV Series heaters utilize separate upper and lower tube temperatures and a series of reflectors to distribute heat more uniformly throughout the building, creating an even comfort zone for birds.



TUNNEL INLET DOOR SYSTEM



Tunnel inlets help to eliminate dead zone areas created by curtain sidewalls and curtain pockets. The tunnel inlet door comes fully assembled and an ultra lightweight, rigid laminate foam panel construction makes for easy installation. All brackets are galvanized for durability and long life.

ROLLSEAL DOORS

Our patented and state-of-the-art RollSeal Doors are a simple, functional and inexpensive environmental control. An air gap is formed by the inner and outer layers of fabric that work together becoming outstanding quality insulation.

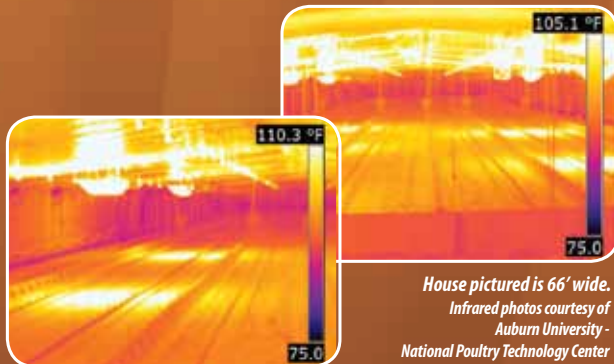


RollSeal

AV SERIES HEATERS

AV Series Features:

- No exposed flame to be affected by air flow or environment.
- Totally enclosed electronics and burner system.
- The highly polished aluminum reflectors allow optimum heat pattern for best uniformity.
- Minimal assembly required.
- Fresh air intake kit (attic version) with 4"x29" duct pipe, intake cap, chain hanging kit, and exhaust flapper cap are standard with each heater.



- Indicator lights display if unit in low or high fire at a glance.
- Easily access key components through an end service panel without having to remove the heater from suspension chains.
- Single Stage BTU: 80,000. Dual Stage BTU: 50,000-80,000.
- Option to direct vent.
- Option to duct fresh air to unit to ensure clean combustion and reduce maintenance.

TUNNEL INLET DOOR SYSTEM

Inlet Door Features:

- Easy Installation.
- Lightweight Doors.
- Energy Efficient.
- Low Maintenance.
- Offered in 4', 5', & 6' Height.
- End channels are Pre-notched for proper, quick and easy installation.
- Aluminum channels add rigidity to the door panels.
- Available in two colors; Black or White.
- Fully Assembled.



Cumberland's **FORMED RUBBER SEAL** provides an airtight seal. Molded runners make for easy alignment and quick installation.



Over time, cords can stretch requiring tension re-adjustment. Cumberland's ratchet style cord adjuster makes ensuring a reliable door seal a simple task.

ROLLSEAL DOORS

RollSeal Features:

- Sizes up to 20' wide by 16' high.
- Aluminum tracks and covers.
- RollSeal patented seal system (double seal with dead air space for good thermal insulation and prevents unwanted air infiltration).
- Excellent seal for pressurization applications.
- Two operators to choose from: manual chain hoist, continuous duty motor.
- Additional switches and opening device options.
- Fabric and window options.
- Remote transmitter/receiver option.



RollSeal



1004 E. Illinois St., Assumption, IL 62510 USA | 217-226-4401 | cumberland@cumberlandpoultry.com
Cumberland and Hired-Hand are a part of GSI, a worldwide Brand of AGCO. Copyright © 2013 AGCO Corporation | 08/13 C-63

