



EVENGROW®
RADIANT AGRICULTURAL HEATER



SUPERIOR
RADIANT PRODUCTS



A FULL RANGE OF **INFRARED HEATING EQUIPMENT** FOR AGRICULTURAL APPLICATIONS

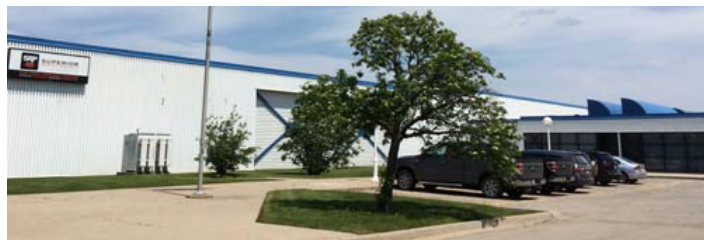
SUPERIOR TECHNOLOGY SUPERIOR PERFORMANCE
WWW.SUPERIORRADIANT.COM

ABOUT US



Superior Radiant Products is an industry leader in the design and manufacture of energy efficient infrared heating solutions. Located in Canada, USA and China, SRP offers a complete range of infrared heating equipment worldwide.

SRP staff members are infrared experts with 100+ years of combined experience. Holding several patents, SRP is dedicated to continuous R&D with an extensive engineering department to ensure superior technology. Our agricultural specialists ensure exceptional after sales service.



Corporate offices and factory located in Stoney Creek, ON Canada



SRP's operation in Kennesaw Georgia, USA

The **SRP EVENGROW®** line of infrared heaters offer the best premium features available in the industry for optimum production and maximum return on investment.

Constructed to withstand the harsh environment of agricultural applications, each radiant tube heater includes:

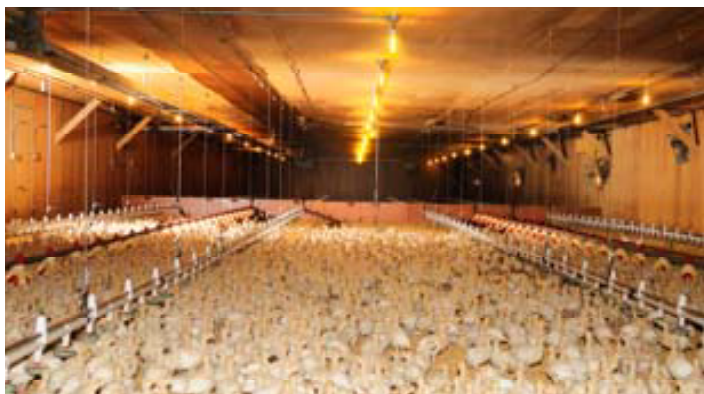
- Waterproof burner housing
- Sealed blower enclosed in burner box
- Aluminized tubing
- Potted ignition module

**100% EFFICIENT
REFLECTOR
ON ALL MODELS**



Successful applications include:

- Broiler houses
- Turkey starter and finishing houses
- Pullet houses
- Calving barns
- Wean to finish hog houses
- Horse arenas



"I am very pleased with the success we have experienced since installing Superior Radiant Products heaters in our turkey brooders. The heater fuel efficiency and layout design provide a heat performance that contributes significantly to the extra 20,000 units a year we produce."

Ron DeVisser, Berry Bush Farms

SUPERIOR TECHNOLOGY SUPERIOR PERFORMANCE
WWW.SUPERIORRADIANT.COM



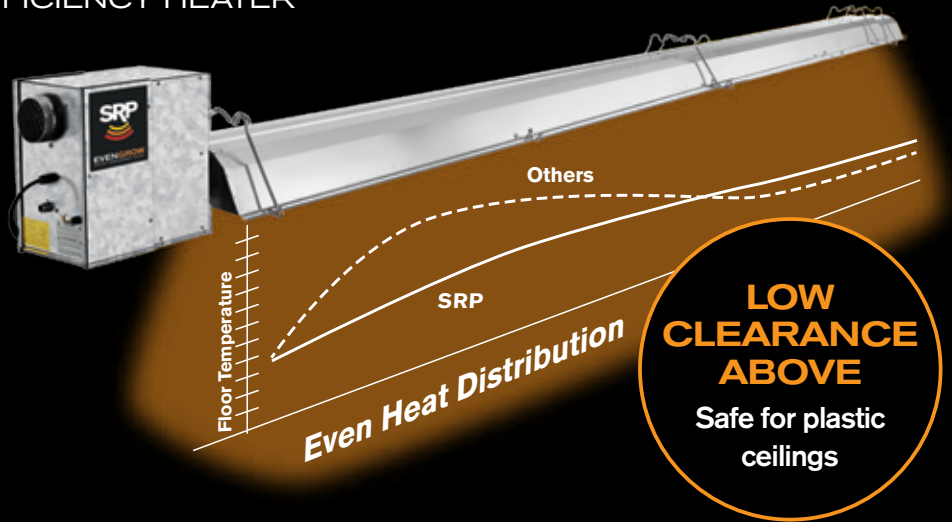
EVENGROW®
RADIANT AGRICULTURAL HEATER

MODEL ALTX HIGH EFFICIENCY HEATER

Patented SRP EVENGROW® Model ALTX technology eliminates the “hot spot” without compromising efficiency.

Improved growth rates and increased water consumption.

No hot spot for maximum animal comfort and less crowding.



SRP EVENGROW®

MODEL AUX HIGH EFFICIENCY HEATER

Premium high efficiency features for the agricultural industry with special anti-corrosion construction for harsh environments.

- Waterproof housing for best reliability
- Potted ignition modules
- Optional tilted reflector or energy efficient side reflectors for wall mounting
- Sealed maintenance-free blower motor



SRP EVENGROW®

MODEL ATX HIGH EFFICIENCY HEATER

All the features of the AUX, the ATX operates with two-stage capability allowing quicker recovery on the high fire and economical steady operation on the low fire.



SRP FLAPPER

HINGED VENT TERMINAL

- The “Flapper” prevents cold air from entering the emitter tube when heater is not operating, and directs warm exhaust air towards the floor of the barn during operation.
- The results are optimum efficiency by keeping the tube hotter longer, full use of exhausted warm air, and maximum animal comfort. Providing an overall greater return on investment.

In addition to our superior technology,
our industry trained staff can offer assistance with:

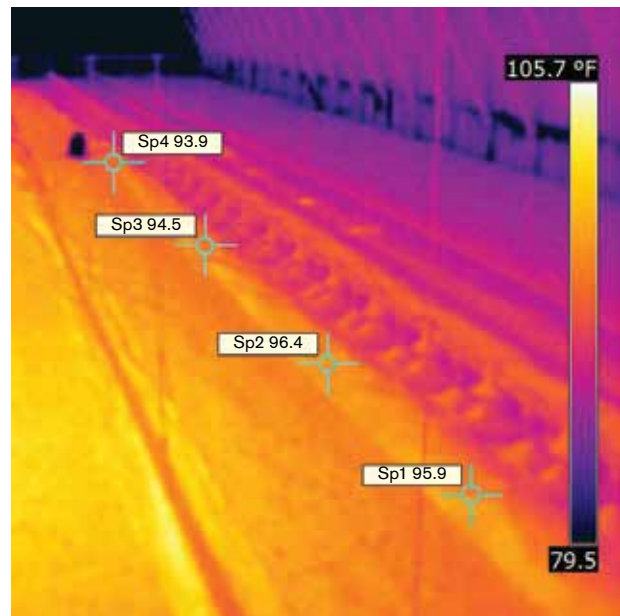
- Layout and design
- Service technician training
- Presentations to integrators and end users on the benefits of radiant heaters
- Installation team training
- Thermal images to document heat patterns and floor temperatures



*"This is a new installation of Superior Radiant ALTX **No Hot Spot** heaters in a hog wean to finish farm. The ALTX uses patented technology to have even tube temperatures the entire length of the tube heater and is extremely efficient directing all the radiant heat down to the floor. It is ideal for wean to finish barns and nursery barns where the penning prevents the pigs from moving into a comfort zone."*

Northeast Agri Systems Inc.

PROOF IS IN THE PHOTO



The thermal image documents the even floor temperatures obtained along the feeder line using the SRP EVENGROW® ALTX series heater in a poultry house application. You can also see the colour variance documenting the coldness of the outside wall in the background of the photo.

SRP EVENGROW® MODEL	BTU RANGE	LENGTHS
ALTX (No Hot Spot)	60,000 to 100,000	30-50 ft
AUX (Single Stage)	60,000 to 175,000	20-60 ft
ATX (Two Stage)	40,000 to 125,000	10-50 ft

THANK YOU

for choosing Superior Radiant Products for your Agricultural Heating needs. At Superior Radiant Products we offer a complete line of radiant heaters that allows each grower, distributor or integrator to get the most efficient heating equipment available within their budget. Whether it is a new house or a retrofit we will explain your options, features, benefits and fuel savings that each model provides.

We look forward to working with you - The SRP Family



SUPERIOR
RADIANT PRODUCTS

SUPERIOR TECHNOLOGY
SUPERIOR PERFORMANCE

Superior Radiant Products Ltd.
563 Barton Street
Stoney Creek ON L8E 5S1 Canada
1 800 527 HEAT(4328) | tel 1 905 664 8274 | fax 1 905 664 8846
sales@superiorradiant.com | www.superiorradiant.com

Superior Radiant Products Inc.
100 - 980 Cobb Place Blvd. NW
Kennesaw, GA 30144-6801 USA

