



**GIVE IT A WHIRL!**

Composting will improve the biosecurity of your farm operation! It's an easy and efficient way to dispose of your deadstock.

**Features:**

- Fork Pockets
- 110 Volts drive unit
- NO FOSSIL FUEL NEEDED
- Self latching loading door
- First in, first out composting
- Poly Urethane insulated drum
- Low design for easy loading
- End of drum unloading for easy removal of composted material



**Available Sizes:**

4' x 5'	Batch Composter	4' x 40'	Continuous Composter*
3'-4" x 18'	Continuous Composter	4' x 50'	Continuous Composter*
4' x 20'	Continuous Composter*	*c/w Receiving Hopper or Self Latching, Spring Loaded Door	
4' x 30'	Continuous Composter*		

**For More Info Contact:**

CountyLine Equipment  
8582 Hwy 23 North,  
Listowel, ON

519-291-5012  
bert@county-line.ca  
www.omnivorecomposter.com

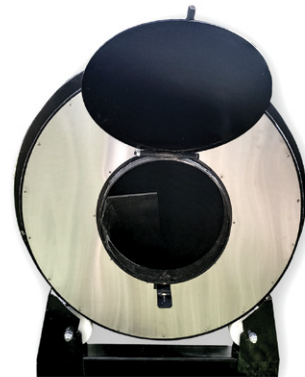
***CountyLine***





# Why Choose the Omnivore Composter?

- Increase Bio Security on your farm.
- No deadstock is accessible for scavengers that could transmit disease to your livestock.
- Cost of electricity to run the Omnivore Batch Composter is less than the cost of running freezers for deadstock.
- Unique low design eliminates the daily hassle of climbing stair when loading.
- Standard fork pockets in the base make the Baby Bear Composter a portable unit.
- Weight of Omnivore composting drum is 100% supported by support rollers.
- Easy to open receiving door, has a spring loaded latch for easy locking.
- Discharge door that works as a slide to guide compost away from compostor when discharging.
- The Poly Urethane Insulated drum ensures that weather has a minimal effect on the composting process and that the heat generated stays in the Omnivore Composter making sure that the composting process is successful.
- The Omnivore Composter is easy to control and adjust, resulting in faster and more consistent end product.



## For More Info Contact:

CountyLine Equipment  
8582 Hwy 23 North,  
Listowel, ON

519-291-5012  
[bert@county-line.ca](mailto:bert@county-line.ca)  
[www.omnivorecomposter.com](http://www.omnivorecomposter.com)

# ***CountyLine***